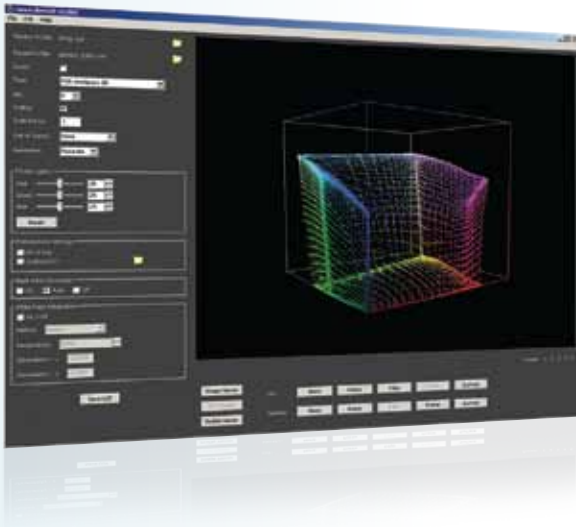




## Simple Colour Confidence



### Discover the Most Flexible Solution for Complete Pipeline Colour Management

It's the most widely adopted colour management system for the film and television industries. It's the most flexible solution to colour pipeline challenges. It's become the de facto standard for colour pipeline management and monitor calibration in the visual effects world.

#### It's cineSpace™.

cineSpace™ opens up new possibilities for LCD monitors and makes digital projectors look just like film. It works with an even wider range of applications and hardware than ever before and integrates with every aspect of your unique colour pipeline, bringing consistency and accuracy to every part of your workflow.

- **COMPLETE COLOUR WORKFLOW CONSISTENCY**

Achieve consistent and accurate colour viewing across all displays, on all platforms, within all applications - supported by our team of cineSpace experts.

- **POWERFUL GUI-BASED LUT BUILDER**

Analyze device profiles, build 3D calibration LUTs and then preview their effects using the new cineCube Visual application. Export your LUTs in a huge range of industry formats for software and hardware tools.

- **VIDEO-TO-FILM WORKFLOW**

The new Inverse Transform feature means you can build transforms to accurately convert your graded video material into log space, ready for printing to film. Combined with our Custom Film Profiling service, you can even ensure that film outs through different labs all look the same.

- **FLEXIBLE DISPLAY PROFILING**

Profile HD monitors driven by HD-SDI streams - in fact, any display - using the Output Independent Profiling option. Plus, you can connect to Cine-tal hardware to both profile your displays and apply calibration LUTs.

- **MATCH CUSTOM "LOOKS"**

Drawing upon the experience of our colour scientists, create custom profiles to match specific "look" and calibration settings used elsewhere in your facility or on a particular project.



## Suite Overview

cineSpace™ saves you time and money by eliminating the guesswork when dealing with film images, allowing artists to view and manipulate frames on their monitors and digital projectors in a near-perfect representation of how they will appear when output to film – or any other deliverable format.

This translates into potential savings of thousands of dollars and countless hours on every project, and ensures that you deliver great results every time.

The cineSpace colour management suite comprises several applications that work together to bring consistency to your workflow.

## cineProfiler™ & cineProfiler-lite™



Accurate colour matching begins with precise profiling: cineProfiler and cineProfiler-lite both optimize and measure your output devices creating display profiles for the cineSpace suite. Whether you're using LCD, Plasma, CRT monitors, DLP digital projectors or whatever is in the future for display technology, cineProfiler creates accurate profiles for all your viewing equipment. These profiles are then loaded into the other applications in the cineSpace suite to deliver accurate colour matching.

cineProfiler-lite is designed for computer workstation monitors and supports X-Rite EyeOne Display 2, HP Dreamcolor and LaCie Blue monitor measurement probes.

cineProfiler is designed for both computer workstation monitors and for a wide range of other display technology including monitors with HD-SDI and HDMI interface, Plasma technology, digital signage and DLP projection. cineProfiler supports a wide range of measurement devices including Photo Research, Klein, Progressive Labs, Sencore, X-Rite, HP Dreamcolor, LaCie Blue, and Konica Minolta. cineProfiler also communicates with Cine-tal's Cinemage monitors and Davio display processors to generate colour patches used to drive and measure HD-SDI, DVI-D and HDMI based display systems.

## equalEyes™



The perfect tool for matching computer workstation monitors throughout your facility, equalEyes modifies the operating system look-up table (LUT) to provide a calibrated desktop display. Using your monitor profile created in cineProfiler, you can then select a suitable target profile such as sRGB, HD (rec. 709) or a custom colour temperature and gamma. User-defined presets enable you to quickly switch between various monitor and target profiles to compare results on different display devices. With equalEyes™, you can match an entire facility to a single reference standard.

## cineCube™ Visual



cineCube Visual is the ultimate application for building 3D calibration LUTs (cubes), allowing you to generate cineSpace colour transforms that can be easily applied in a wide range of tools. With a powerful GUI, cineCube Visual enables you to preview the effects of your LUT applied to an image, making it simple to adjust the calibration parameters.

cineCube Visual features a full range of cineSpace options, including inverse transforms, black point correction, white point adaptation, printer lights and out-of-gamut settings, and also includes tools to analyze profiles and LUTs. Supporting a vast range of industry hardware and software tools, cineCube Visual makes it simple to achieve precise cineSpace calibration, no matter which components you choose for your colour pipeline.

## cinePlugins™



The cineSpace 3D engine is incorporated into our cinePlugins: cinePhotoshop, cineShake, cineFusion, cineNuke and cineFilmMaster. Whether you use Apple's Shake, Adobe's Photoshop, eyeon Software's Digital Fusion, The Foundry's Nuke or Digital Vision's Nucoda Film Master, you can take advantage of full 3D colour transforms to ensure a near perfect match to your output result, no matter whether that's film, HD or DCI.

cineSpace matching within each application allows you to view the final result as it will really appear. Adjust parameters "on-the-fly" with immediate visual feedback, with options for working in linear or logarithmic colour spaces and gamut treatment mode for identifying out-of-gamut colours. You can even "burn-in" the film look for sending to HD output or delivering off-site client previews.



## Custom Film Profiling

To get the best possible preview on-screen you need to know exactly what you're going to get on film – and this means making no assumptions. By taking advantage of the cineSpace custom film profiling service, you can be certain that your pipeline is correctly calibrated.

Custom film profiling takes into account your film recorder, stocks and lab to create a precise representation of how the colours are reproduced when going to print. There's no guesswork involved and you can be confident that what you see on your displays is precisely what will appear on the film out, meaning that you can concentrate on the important things: creating exactly the "look" that you want to achieve.

## Colour Consultation

When you use cineSpace, you're not alone. You have the support of experienced cineSpace colour scientists, plus the confidence of knowing that more than two hundred world-class facilities – and thousands of users – entrust their colour accuracy to cineSpace. This vast body of colour experience means that you'll always have someone to help when you have calibration questions.

More directly, you can employ the services of a cineSpace Certified Professional to consult on your specific pipeline needs. Whether it be a need for education in colour management concepts, training in the cineSpace suite or specialized colour pipeline services, help is at hand when you need it.

## cineSpace™ for Every Pipeline

Every colour pipeline is different. The cineSpace™ suite provides the range of tools needed to adapt to a wide range of workflows. Whether you're a DI facility, a VFX house or an animation studio, cineSpace™ has the flexibility to address your colour management needs.

Here are just a few examples:

- **cineSpace™ for DI**

Colour grade with confidence, knowing that you're previewing your film just as it will appear in the cinema. cineSpace™ delivers precise display calibration, matching your reference monitor or projector to your own unique film out path and ensuring consistent viewing all throughout the colour pipeline.

- **cineSpace™ for VFX**

Match your monitors and preview the final output across all departments – lighting, compositing, grading and more. Work with material originating from a variety of formats and colour spaces, viewing all elements correctly or converting into a common space as required. cineSpace™ provides a window through which to accurately view the end result, ensuring your artists have a relevant visual context when making colour decisions.

- **cineSpace™ for Animation**

Calibrate your entire animation facility so that everyone sees exactly the same thing; as it will appear on the final print. cineSpace™ ensures all your artists will all see the same thing – the right thing – no matter what type of display they are using.

- **cineSpace™ for Games**

Align all your monitors – CRTs and LCDs alike – to provide a consistent viewing environment for your whole team, one that's matched to the correct video colour standards. With cineSpace™, artists, supervisors and producers can now agree on which monitor to trust – all of them!

## Next Steps

### Get cineSpace™

Sign up for a free evaluation of cineSpace at our website:

[www.cine-tal.com](http://www.cine-tal.com)

### Contact Us

[cinespace-support@cine-tal.com](mailto:cinespace-support@cine-tal.com)

+1 317.576.0091